

With its proven ability to detect recurrence throughout the surveillance period, NavDx<sup>®</sup> testing provides a viable option for patients who decline routine follow-up imaging

### Presentation

- ▶ 61-year-old male, Non-smoker
- ▶ 6-month history of tongue swelling, oral bleeding, dysphagia, edentulism, and right-neck swelling

### Diagnosis

- ▶ Clinical stage IV, p16+, HPV16+, T4N2M0 SCC of base of tongue
- ▶ Baseline NavDx TTMV Score of 14,808

## Optimizing Clinical Care with the NavDx Test

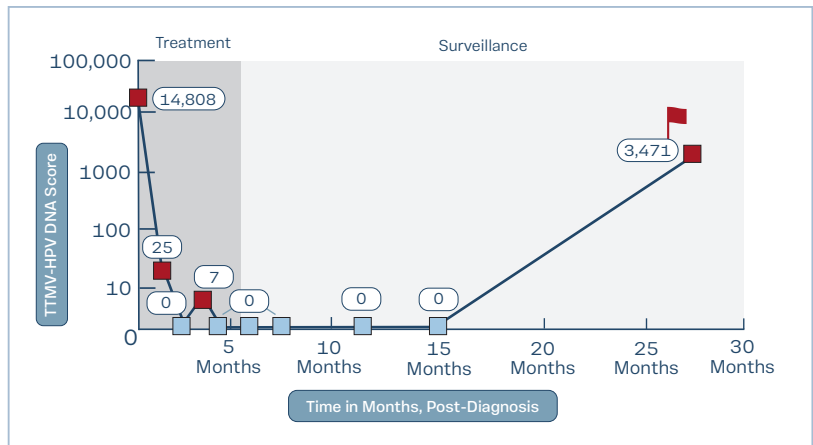
### Treatment

Following 3 cycles of neoadjuvant induction chemotherapy, the patient's TTMV Score decreased from its pre-treatment level of 14,808 to 0. At this time, CRT was initiated. During CRT, the patient saw a transient elevated TTMV Score of 7, but the score resolved to 0 upon completion of CRT.

### Surveillance

The patient opted for a holistic approach to his care during surveillance, declining all imaging provided he was asymptomatic. The care team and the patient chose to continue routine monitoring with NavDx testing as a surveillance tool. The patient's TTMV Scores remained 0 with serial testing for nearly a year.

During a routine yearly follow-up visit, the patient's TTMV Score was 3,471, prompting a PET-CT scan that revealed multiple hypermetabolic right lung nodules, despite the patient remaining asymptomatic at that time.



“Our patient remained completely asymptomatic throughout his follow-up. We would never have suspected the presence of any disease, and it was only because of the NavDx test that it was identified. This test is an invaluable tool for surveillance.” – Leslie Worona, FNP-BC, OCN



Scan to read more Case Studies  
or visit NavDx.com